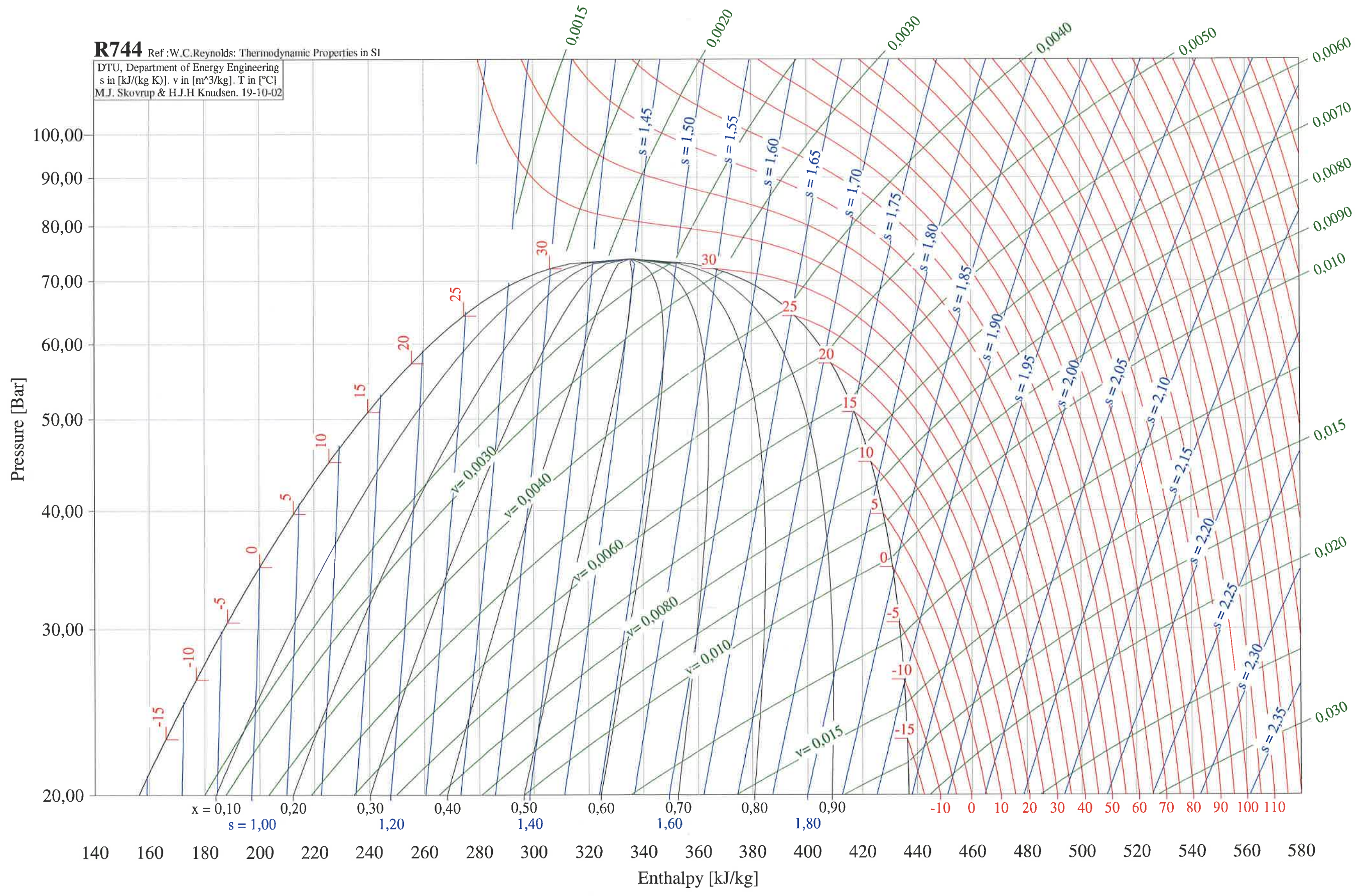


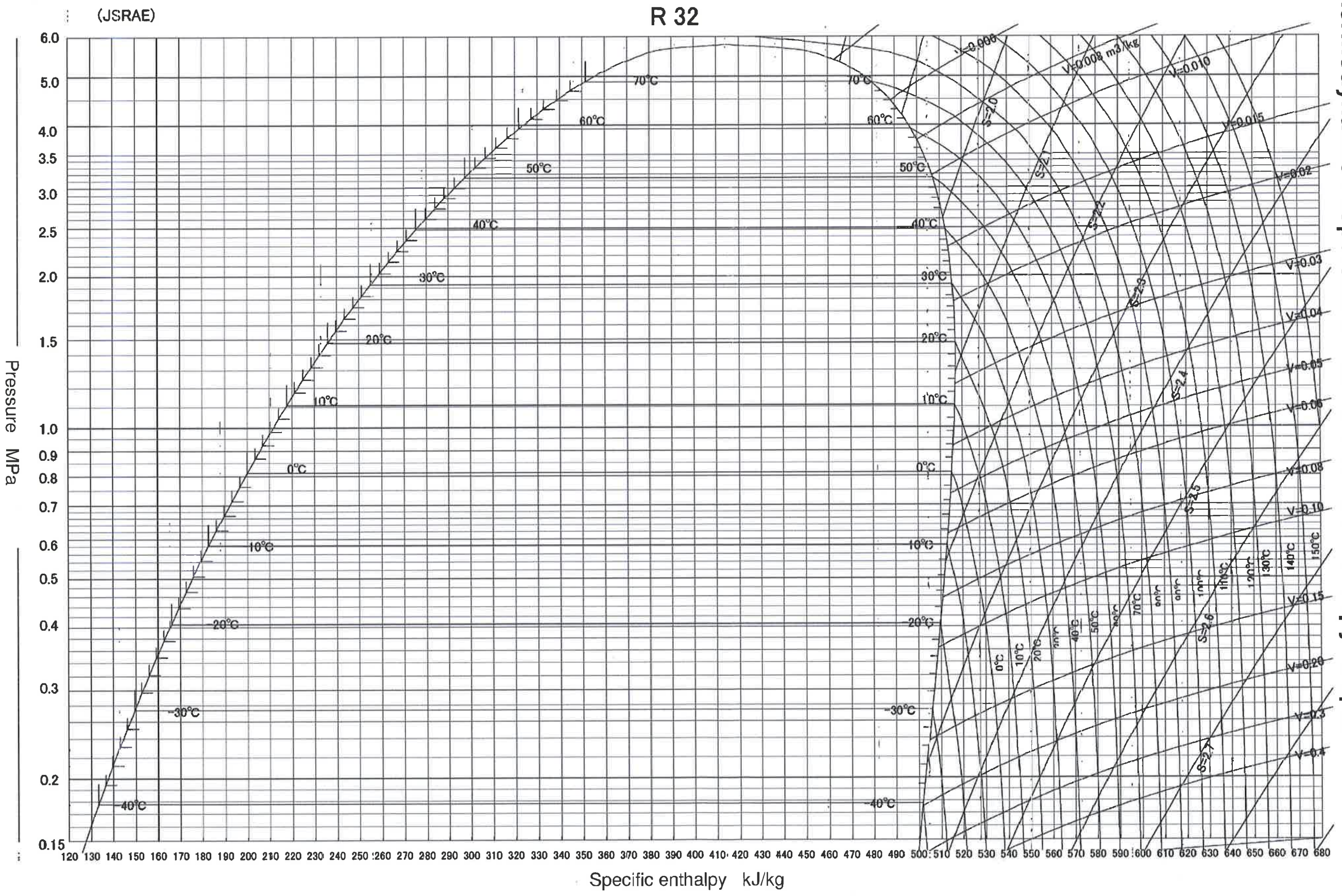
R744

Ref: W.C.Reynolds: Thermodynamic Properties in SI

DTU, Department of Energy Engineering
s in [kJ/(kg K)], v in [m³/kg], T in [°C]
M.J. Skovrup & H.J.H Knudsen, 19-10-02

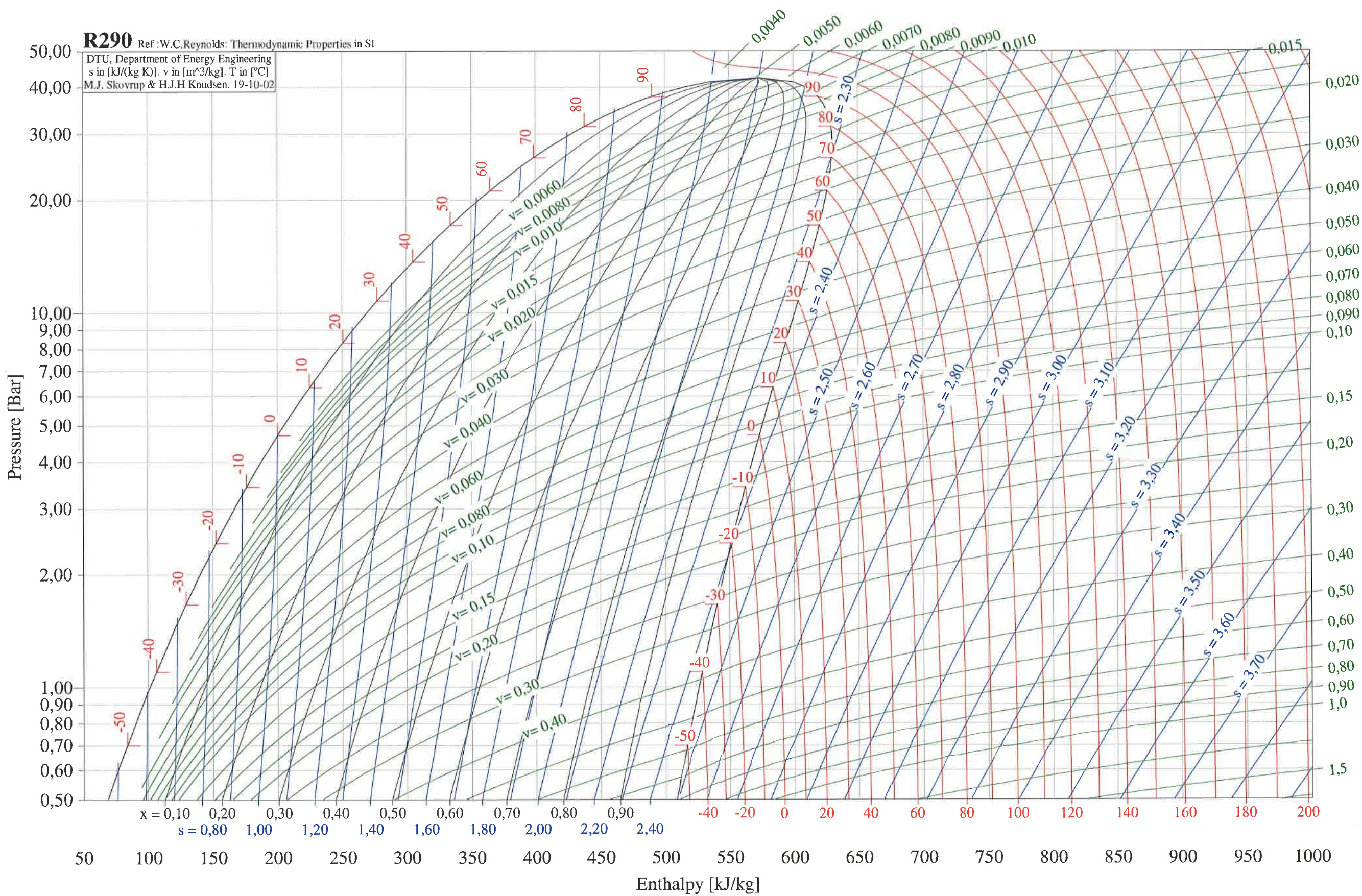


Thermodynamic Properties of R32 <Pressure-Enthalpy Graph>



R290 Ref: W.C.Reynolds: Thermodynamic Properties in SI

DTU, Department of Energy Engineering
s in [kJ/(kg K)], v in [m³/kg], T in [°C]
M.J. Skovrup & H.J.H Knudsen, 19-10-02



R600 Ref: W.C. Reynolds: Thermodynamic Properties in SI

DTU, Department of Energy Engineering
s in [kJ/(kg K)], v in [m³/kg], T in [°C]
M.J. Skovrup & H.J.H Knudsen, 19-10-02

